

Breathe Fresh

AXIAL FANS | CENTRIFUGAL BLOWERS | HEAVY DUTY EXHAUST FAN | DUST COLLECTORS
MOTORIZED ROOF TOP FANS | MAN COOLERS AND ALL TYPES OF VENTILATION PRODUCTS



(Manufacturers & Exporters)

ABOUT US

What happens, when you do one thing for more than a decade..... you get good at it.

Vayuvents Private Limited is an outcome of a decade old dream of our passionate founders who want to set up a world class manufacturing facility for making high quality Ventilation Equipment. With a modest beginning through our parent company (**Airpro Industries India**) in 2010, we have grown by leaps and bounds. Today we have an enviable list of clients, from more than 50 Cities and 5 different countries, including many public, private sector majors and govt. run companies. With **Vayuvents™** as our new establishments, we are determined to be the game changer in the Ventilation industry.

With a team of qualified and highly experienced professionals having sharp engineering acumen, we aim to offer more and more innovative products for Ventilation industries worldwide. Our design, engineering knowledge & manufacturing expertise coupled with decades of experience in Ventilation equipment, makes us a preferred global choice for Pollution control solutions and an essential collaborator beyond a simple supplier of equipment.

Our vast state of art manufacturing facilities with modern computerized machines enable us to manufacture high volume, best in class quality of Axial Fans, Centrifugal Blowers, Dust Collectors, Fume Scrubbers, Attic Fans and all types of ventilation products.

All **Vayuvents™** Fans are available in various models. **Vayuvents™** Fans are manufactured under best quality control and confirm to ISI specification. We at **Vayuvents™** believe in long-term customer association and can manufacture fans based on individual customer needs and requirements.

Clients:

- **Godrej**
- **ABB Power Products**
- **Indian Railways**
- **SPNG Groups**
- **Vijai Marines**
- **Manav Energy Pvt Ltd.**
- **Maruti Machine Tools**
- **Gee Limited**
- **ICT (Matunga)**
- **IOGS**
- **DFPCL**



AXIAL FLOW FANS

An axial fan is a type of fan that causes gas to flow through it in an axial direction, parallel to the shaft about which the blades rotate. Capable of generating a large air flow, axial flow fans are best suited for applications requiring ventilation and cooling where the entire space inside must be cooled.



AXIAL FLOW FANS



| Fan Size mm / inches | Fan Speed RPM | Motor (HP) | Air Delivery CFM |
|-------------------------|------------------|---------------|---------------------|
| 300 (12") | 1440 | 0.25 | 600-2000 |
| 400 (16") | 1440 | 0.5 | 2000-2600 |
| 400 (16") | 1440 | 0.75 | 2600-4000 |
| 450 (18") | 2880 | 1 | 4000-6000 |
| 600 (24") | 1440 | 1 | 6000-8000 |
| 700 (28") | 1440 | 2 | 8000-9000 |
| 800 (32") | 960 | 1.5 | 9000-11000 |
| 800 (32") | 960 | 2 | 11000-14000 |
| 900 (36") | 960 | 3 | 14000-19500 |
| 1000 (40") | 960 | 5 | 19500-26500 |

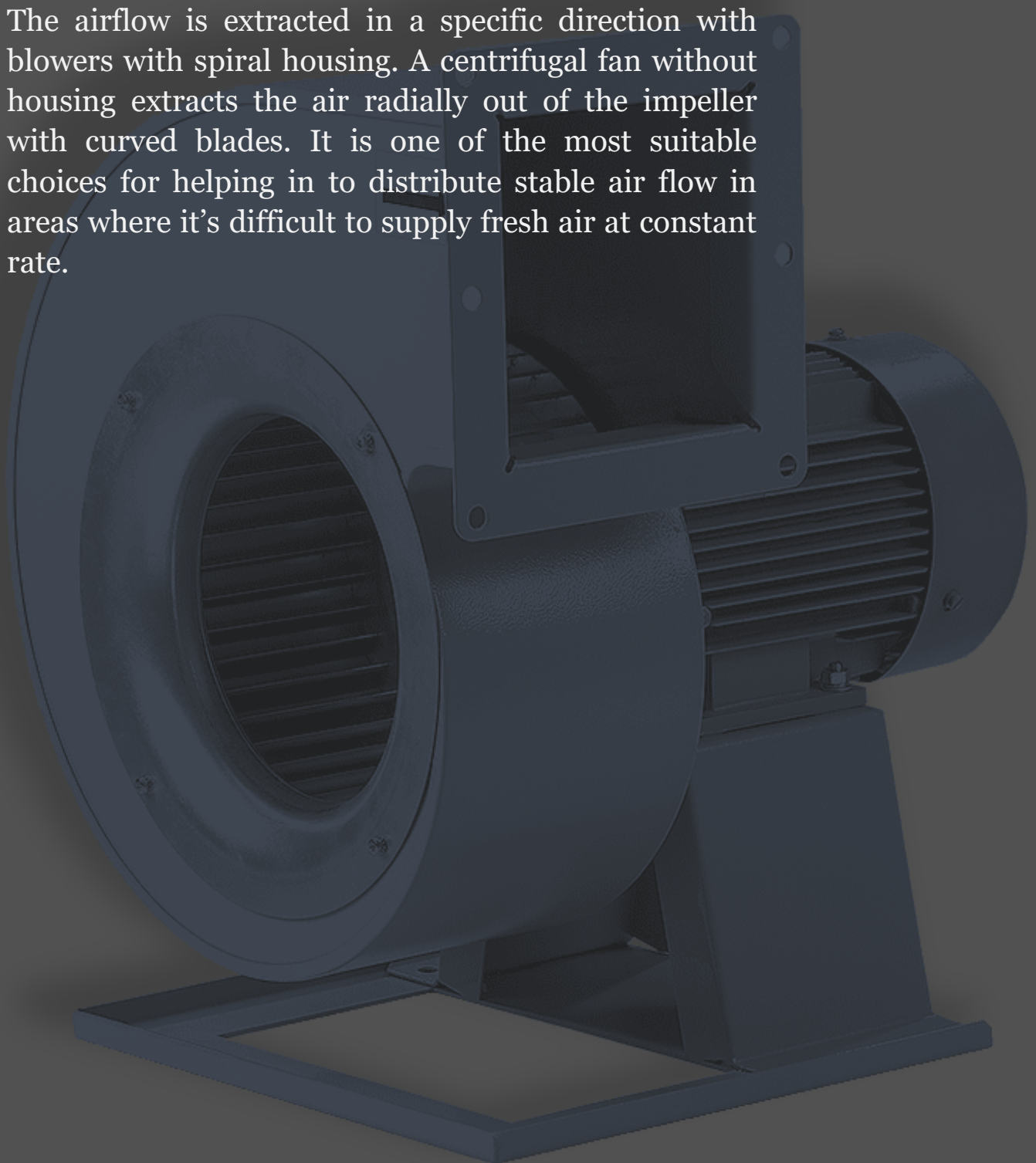
Note: Other sizes are also available as per Specification and requirements of the Clients.



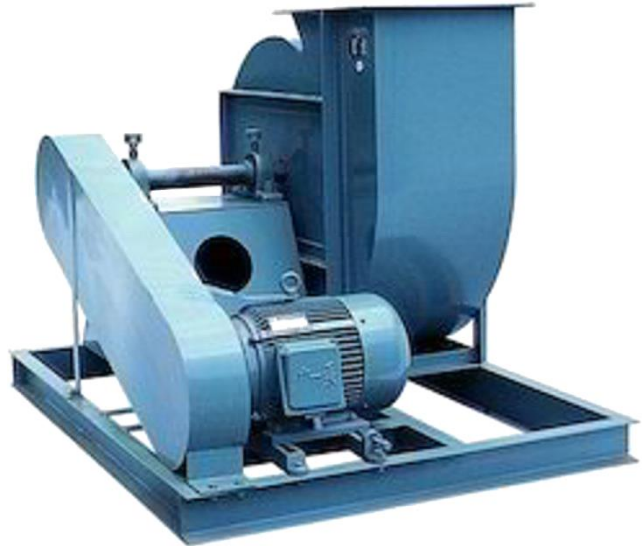
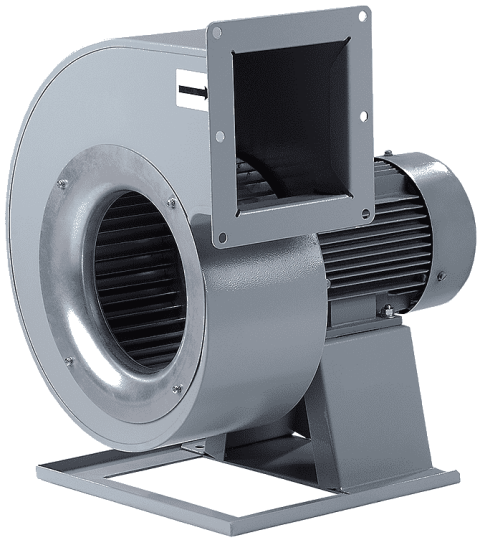
Centrifugal Blowers

Centrifugal fans are used if applications need higher pressure with the same or higher airflow than axial fans. A centrifugal blower draws in the air through the inlet axially (in parallel) to the drive axle, deflects the airflow 90 degrees through the rotation of the impellers and extracts it radially.

The airflow is extracted in a specific direction with blowers with spiral housing. A centrifugal fan without housing extracts the air radially out of the impeller with curved blades. It is one of the most suitable choices for helping in to distribute stable air flow in areas where it's difficult to supply fresh air at constant rate.



Centrifugal Blowers



Specifications:

- ❖ Fan Speed: 700 RPM to 3000 RPM
- ❖ Available in various sizes 0.25 hp to 150 hp
- ❖ Air handling capacities of 100 CFM to 100000 CFM
- ❖ System resistance of 25mm to 2500mm WG static pressure



Man Coolers

Vayuvents has designed Man Coolers to provide utmost volume circulation of air, hence resulting in positive feedback from our esteemed clients.

These man coolers consist of impeller that is manufactured using cast aluminum alloy coupled on motor shaft. The motor with impeller assemble is mounted in a tubular cradle. Also, there is a provision to adjust the angle of air.



Man Coolers



| Fan Size mm / inches | Fan Speed RPM | Motor (HP) | Air Delivery CFM |
|-------------------------|------------------|---------------|---------------------|
| 300 (12") | 1440 | 0.25 | 600-2000 |
| 400 (16") | 1440 | 0.5 | 2000-2600 |
| 400 (16") | 1440 | 0.75 | 2600-4000 |
| 450 (18") | 2880 | 1 | 4000-6000 |
| 600 (24") | 1440 | 1 | 6000-8000 |
| 700 (28") | 1440 | 2 | 8000-9000 |
| 800 (32") | 960 | 1.5 | 9000-11000 |
| 800 (32") | 960 | 2 | 11000-14000 |
| 900 (36") | 960 | 3 | 14000-19500 |
| 1000 (40") | 960 | 5 | 19500-26500 |

Note 1: Other sizes are also available as per Specification and requirements of the Clients.

Note 2: Stand sizes are also available as per Specification and requirements of the Clients.



Roof Ventilators

We have designed & develop Powered FRP base Roof Exhaust Fans as per today's industrial needs for almost 90% of manufacturing and process industries to help them in improving the best working environment.

These fans provide exhaust capacity of 10000 CFM, which is almost 20 times more effective as compared with the powerless roof ventilation fan.



Roof Ventilators



Powerless Roof Fans



Motorized Roof Fans



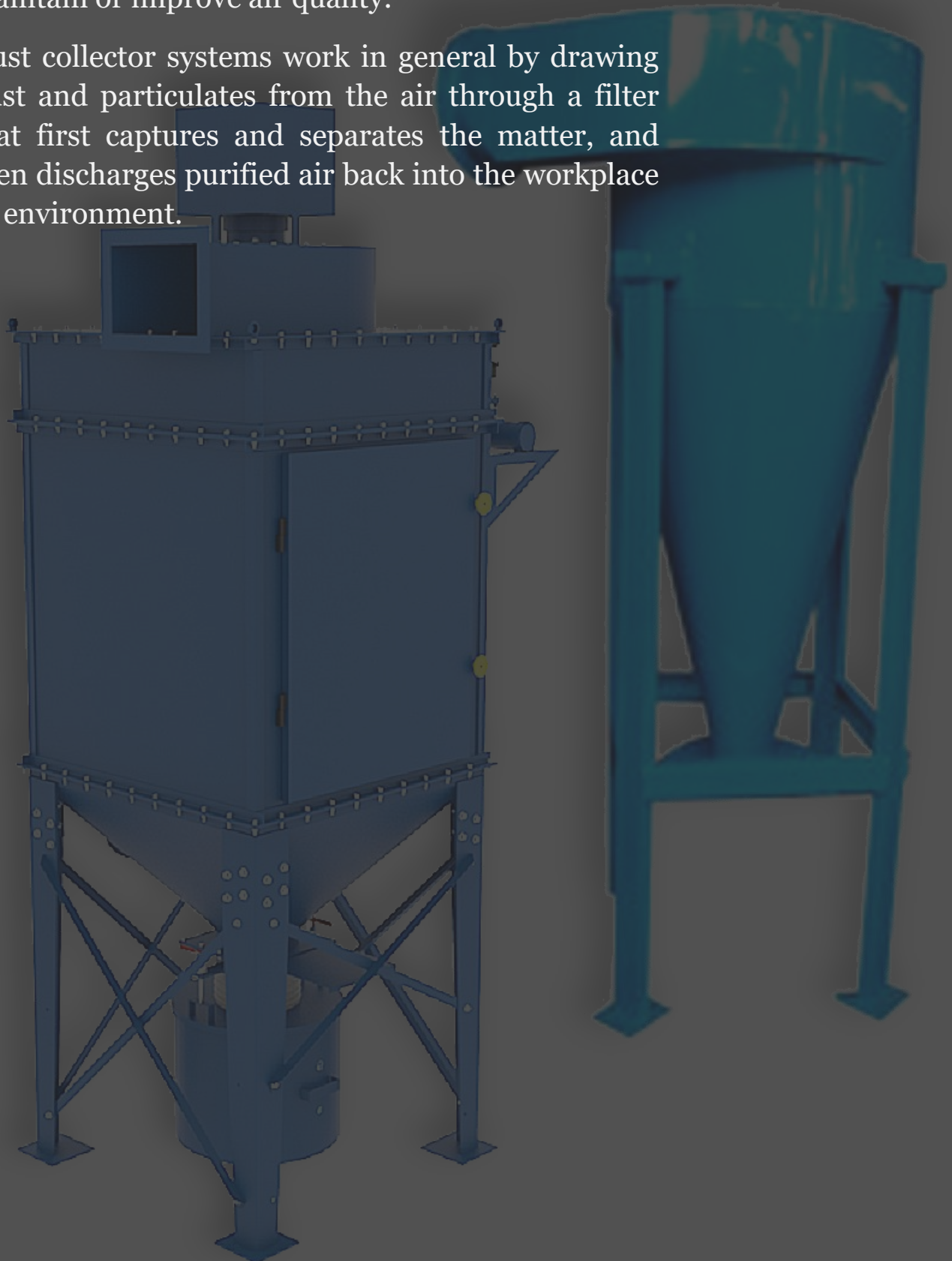
| Products | Motor (hp) | Fan Speed | CFM |
|---------------|------------|-----------|--------|
| Powerless 24" | N/A | N/A | 250 |
| Motorized 24" | 1 | 1440 | 8,000 |
| Motorized 32" | 1.5 | 960 | 10,000 |



Dust Collectors

Dust collectors may be of single unit construction, or a collection of devices used to separate particulate matter from the process air. They are often used as an air pollution control device to maintain or improve air quality.

Dust collector systems work in general by drawing dust and particulates from the air through a filter that first captures and separates the matter, and then discharges purified air back into the workplace or environment.



Dust Collectors



Specifications:

- ❖ Fan Speed: 700 RPM to 3000 RPM
- ❖ Available in various sizes 0.25 hp to 150 hp
- ❖ Air handling capacities of 100 CFM to 100000 CFM
- ❖ System resistance of 25mm to 2500mm WG static pressure

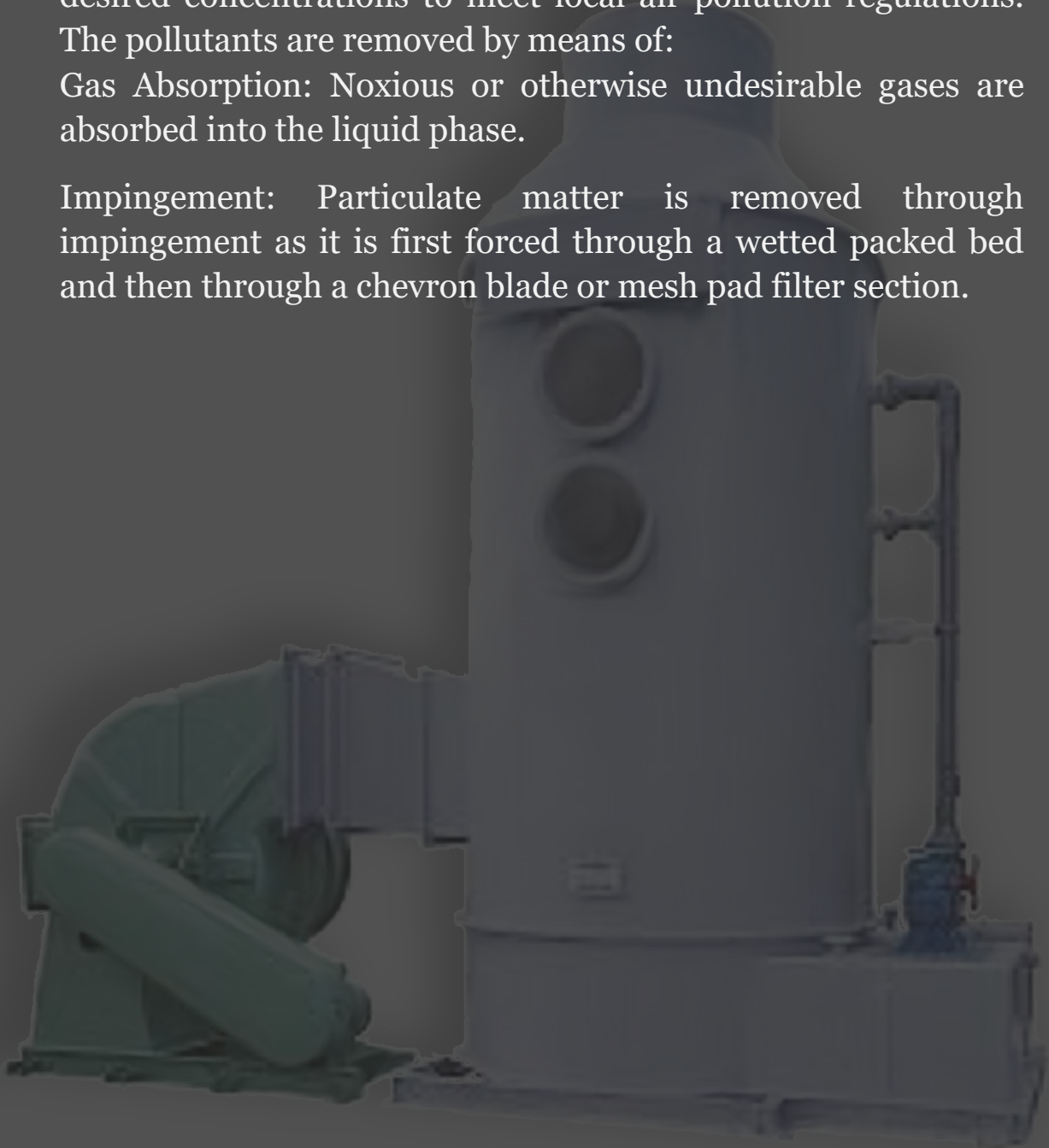


Fume Scrubbers

Vayuvents manufactures a complete range of high performance scrubbers that are used for removing undesirable acid fumes, chemical substances or odours from the gas stream. Fume scrubbers manufactured by Vayuvents are individually designed to remove mist, entrained liquid particles, noxious corrosive gases and vapours from the exhaust air stream. A packed bed using Vayuvents Scrubber Packers is the heart of the scrubber. Pollutant gases can generally be removed to any desired concentrations to meet local air pollution regulations. The pollutants are removed by means of:

Gas Absorption: Noxious or otherwise undesirable gases are absorbed into the liquid phase.

Impingement: Particulate matter is removed through impingement as it is first forced through a wetted packed bed and then through a chevron blade or mesh pad filter section.



Fume Scrubbers



Specifications:

- ❖ MOC: PVC, PP, PVC+FRP, PP+FRP, SS-316, SS-304, MS
- ❖ Available in various sizes 0.25 hp to 150 hp
- ❖ Capacities of 100 CFM to 100000 CFM
- ❖ System resistance of 25mm to 2500mm WG static pressure



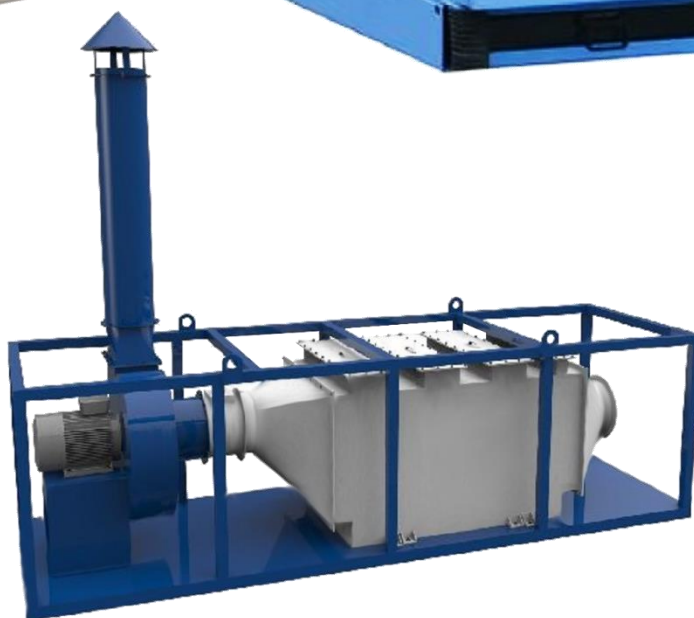
Kitchen Dry Scrubber

We are the dominant manufacturer and supplier a wide array of Kitchen Dry Scrubber. The offered product is produced working with the highest quality raw material and state-of-the-art technology in acquiescence with the international quality standards.

Dry Scrubber used in filtration/ cleaning of kitchen exhaust air. The product is useful for restaurants, hotels, office canteens, cafeteria, and club canteens.



Kitchen Dry Scrubber



Specifications:

- ❖ Particle capture range: 0.01 μm to 10 μm
- ❖ Available in various sizes 1 cell to 4 cell
- ❖ Air handling capacities of 1500 CFM to 8000 CFM
- ❖ Product length: 720 mm to 2410 mm



Venturi Scrubber

Venturis can be used to collect both particulate and gaseous pollutants, but although the liquid surface area provided is quite large they are more effective in removing particles since particles can be trapped by contact, but gases must be trapped by absorption during the relatively short exposure time.



Venturi Scrubber



Specifications:

- ❖ MOC: PVC, PP, PVC+FRP, PP+FRP, SS-316, SS-304, MS
- ❖ Available in various sizes 0.25 hp to 150 hp
- ❖ Capacities of 100 CFM to 100000 CFM
- ❖ System resistance of 25mm to 2500mm WG static pressure



Ducting

The ducting is made from galvanized sheet metal. The duct is made up of a spiral pipe or material configuration.

Ducts are conduits or passages used in heating, ventilation, and air conditioning (HVAC) to deliver and remove air. The needed airflows include for example, supply air, return air, and exhaust air. Ducts commonly also deliver ventilation air as part of the supply air.

As such, air ducts are one method of ensuring acceptable indoor air quality as well as thermal comfort. A duct system is also called ductwork. Planning (laying out), sizing, optimizing, detailing, and finding the pressure losses through a duct system is called duct design.



Ducting



Specifications:

- ❖ MOC: Galvanized Iron
- ❖ Available in 2 gauges, 22 gauges to 24 gauges
- ❖ Length as per clients' requirements and preferences
- ❖ System resistance of 25mm to 2500mm WG static pressure



Hot Air Blowers

We are engaged in manufacturing and exporting a matchless range of Hot Air Blowers to the prestigious customers. These blowers are presented in different capacities and are being offered at the best rates in the market. Further, it is highly acclaimed in the market for its durability and UN-interrupted performance.



Hot Air Blowers



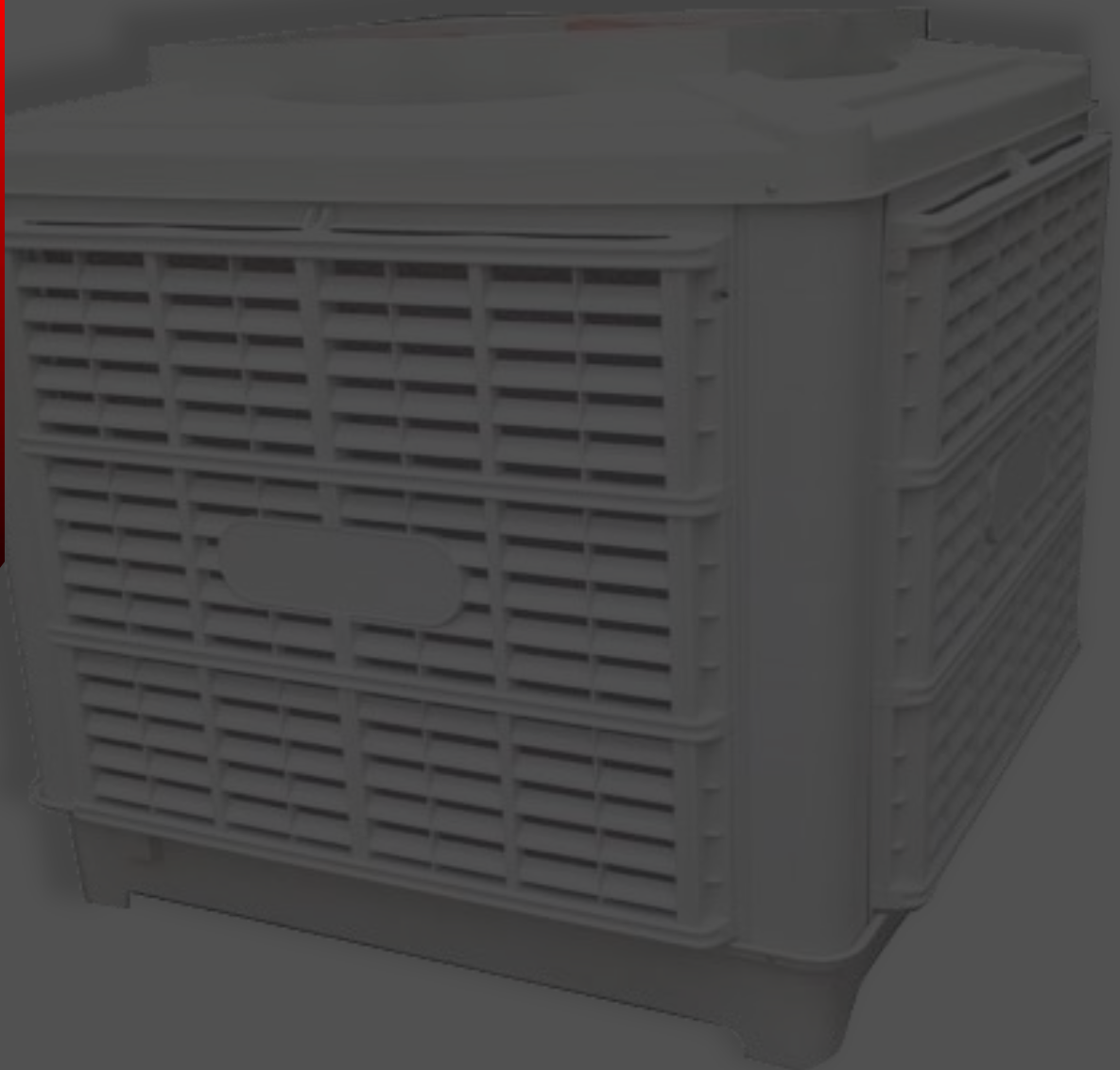
Specifications:

- ❖ Temp. Rise up-to 150 degree Celsius
- ❖ Customized as per customer's requirements.
- ❖ Comes with automatic control panel for 100% Safety

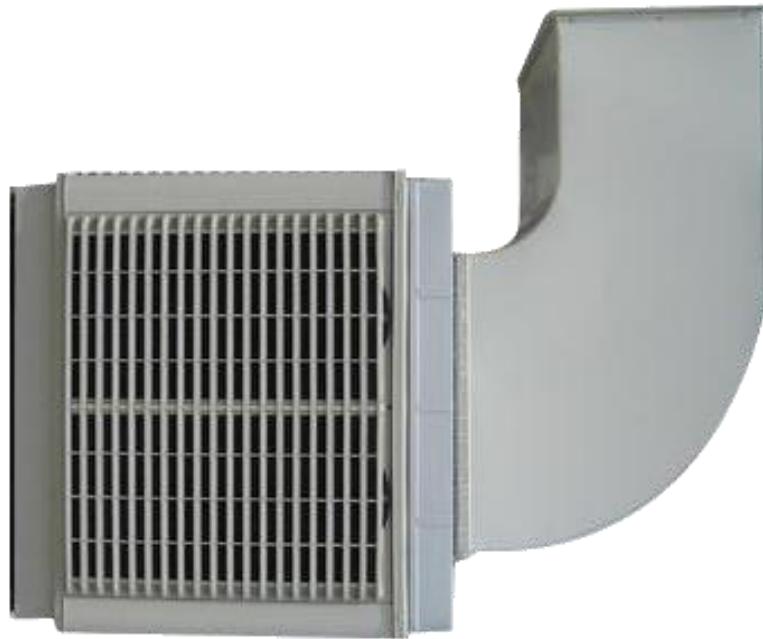


Air Washer Unit

An air washer is a hybrid appliance, a combination of an air purifier and a humidifier. Air washers remove many types of household allergens—including dust, dust mites, pet dander, pet hair, mold spores, pollen, and other airborne particles—while adding moisture to the air. The most popular types of air washers use impeller technology.



Air Washer Unit



Specifications:

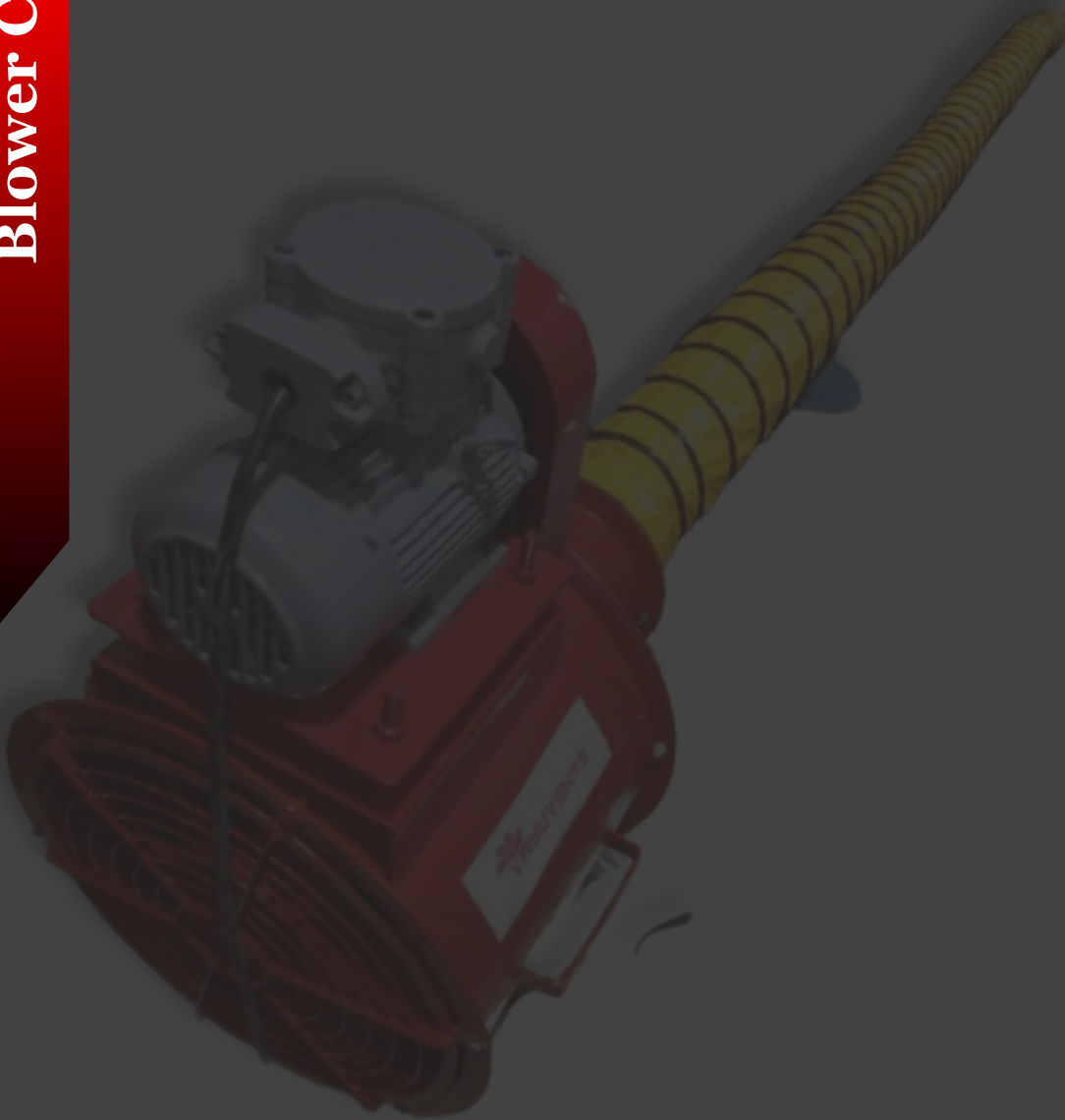
- ❖ Air Flow : 18000 CMH to 30000 CMH
- ❖ Motor Power : 1.1kw to 3kw

Note 1: Other sizes are also available as per Specification and requirements of the Clients.
Note 2: Stand sizes are also available as per Specification and requirements of the Clients.



Blower Cum Exhauster

We are involved in providing a varied series of **Blower Cum Fume Exhauster**. Our products are made under the management of dexterous experts. This product is mainly used to expel Gases, Vapours, and fumes from pipeline, tank holds & underground construction as well as to supply Air breathing apparatus.



Blower Cum Exhauster



| Fan Size mm / inches | Fan Speed RPM | Motor (HP) | Air Delivery CFM |
|-------------------------|------------------|---------------|---------------------|
| 300 (12") | 1440 | 0.25 | 600-2000 |
| 400 (16") | 1440 | 0.5 | 2000-2600 |
| 400 (16") | 1440 | 0.75 | 2600-4000 |
| 450 (18") | 2880 | 1 | 4000-6000 |
| 600 (24") | 1440 | 1 | 6000-8000 |
| 700 (28") | 1440 | 2 | 8000-9000 |
| 800 (32") | 960 | 1.5 | 9000-11000 |
| 800 (32") | 960 | 2 | 11000-14000 |
| 900 (36") | 960 | 3 | 14000-19500 |
| 1000 (40") | 960 | 5 | 19500-26500 |

Note: Other sizes are also available as per Specification and requirements of the Clients.





VAYUVENTS PRIVATE LIMITED
(Manufacturer & Exporter)

Office: 9096188703/9096163605
Email: info@vayuvents.com
www.vayuvents.com

Office: Shop No. 38, Viva Complex - II,
Near Hotel Shalimar Inn, Waliv Road,
Vasai (East), Mumbai-401208

Factory: Unit No. 01, Richard Compound,
Near Umang Pharma, Vasai phata, Vasai
(East), Mumbai-401208